

Ten Locations in San Francisco, Marin, San Mateo and Contra Costa

Richmond District
3rd Avenue between
Geary & Clement
(415) 752-1614

Marina District
3237 Pierce Street
Chestnut & Lombard
(415) 440-1000

San Rafael
1580 Lincoln Ave. just off
Hwy. 101
(415) 453-3977

Kentfield
700 Sir Francis Drake Blvd.
at Wolfe Grade
(415) 454-0262

San Bruno
675 El Camino Real
(650) 869-6000
3 blocks south of I-380

Sunset District
2700 Sloat Blvd.
46th & Sloat Blvd.
(415) 566-4415

Novato
2000 Novato Blvd. at
Wilson
(415) 897-2169

Mill Valley
657 E. Blithedale at Lomita
(415) 388-0102
401 Miller Ave. at La Goma
(415) 388-0365

Danville
828 Diablo Road
(925) 743-0288

Garden Design Department
401 Miller, Mill Valley
(415) 388-3754

Open 7 days a week 8:30 am to 6:30 pm
Visit Sloat on the Web: www.sloatgardens.com

Visit our new San Francisco store on Pierce Street!



420 Coloma Street
Sausalito, CA 94965-1428

Pre-Sorted
Standard
U.S. Postage
Paid
StrahmCom

Printed on
recycled paper
using soy
based ink!

Great plants and great advice to help them grow!

We are open on July 4th!

8 SLOAT NOTEBOOK July/August 2007

July & August Gardening Guide

JULY

Plant

☞ Summer flowers abound! Fill your garden with color that will carry you through until fall such as cosmos, snaps, daisies, salvias and zinnias.



Fertilize

☞ Feed vegetables, perennials, containers, hanging baskets with a water-soluble fertilizer such as **E.B. Stone Fish Emulsion** or **Maxsea All Purpose Fertilizer**. Avoid feeding during the heat of day.
☞ Fertilize camellias, azaleas and rhododendrons with **E.B. Stone Organics Azalea, Camellia and Gardenia Food**.

Prune/Maintain

☞ Cut or pinch off spent flowers to promote more blooms. Finish pruning all spring-flowering shrubs.
☞ Spray evergreens & shrubs with CloudCover to reduce drought stress.
☞ Mulch all garden beds with **Sloat's Forest Mulch Plus** to protect from summer heat and keep garden maintenance down.



AUGUST

Plant

☞ Time to start planting fall vegetables such as broccoli, cabbage, lettuce, brussel sprouts, celery, kale and chard.
☞ Select and plant bearded irises for spring. Dig up and divide existing irises. (The rest of Sloat's fall bulbs arrive in September).

Fertilize

☞ Don't forget to feed vegetables and flowers with a slow-release fertilizer such as **E.B. Stone All Purpose**.

Prune/Maintain

☞ Make sure all tall and vining vegetables are supported by cages, stakes, or trellises to avoid crop loss.
☞ Time to summer-prune fruit trees to control height, maintain shape and eliminate suckers. Stop by Sloat for a good pair of high quality **Bahco Loppers** or gloves.
☞ Water lawns deeply. Two shorter watering periods with a 10–15 minute period in between reduces runoff, saving water and creating a healthier lawn. Set your timers. Fertilize your lawn with **Nature's Green Lawn food**.



About this Newsletter: The Gardener's Notebook is published bimonthly by Sloat Garden Center for the education and enjoyment of Bay Area gardeners. Information is collected from Sloat's expert staff, current horticultural publications and Sunset's Western Garden Book. Send address corrections to: 420 Coloma Street, Sausalito, CA 94965.

Gardener's Notebook

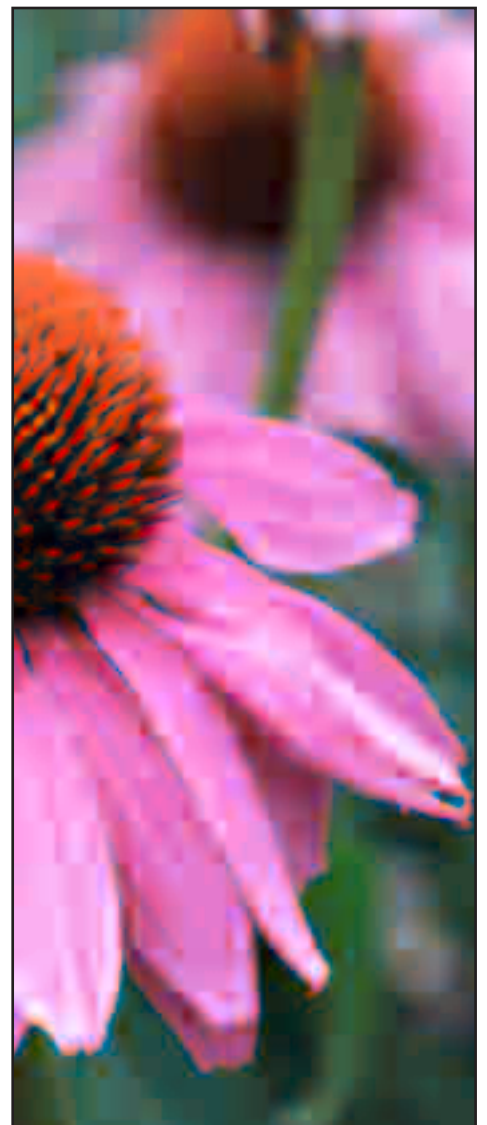
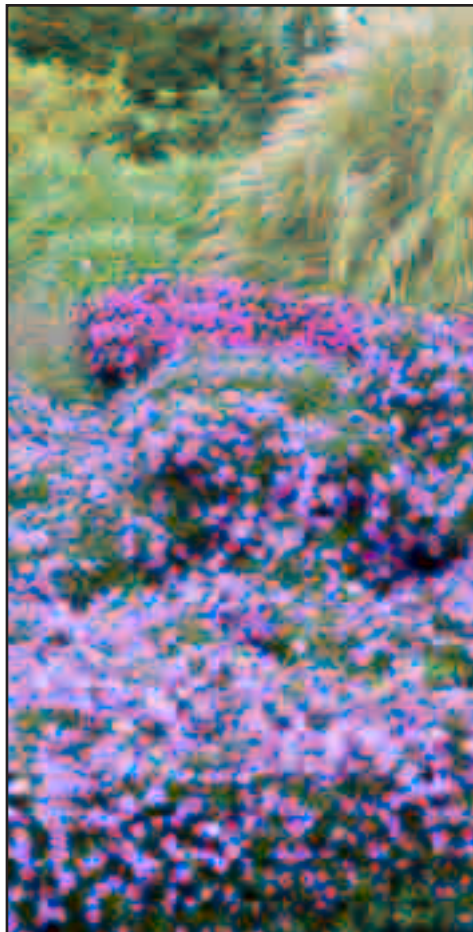
Volume 21, No. 4

News, Advice & Special Offers for Bay Area Gardeners

July/August 2007



Celebrate Summertime Gardening



succulents

magic blooming night gardens

gardenias

pottery sample sale

So very succulent!



Aeonium

Succulents are intriguing garden characters. They parallel a number of human personality traits; they do well with just a little and they are persistent in the face of adversity. These are also great attributes for your garden!

A succulent is essentially a flowering perennial that stores water in its juicy leaves, stems or roots in order to withstand periodic drought. (Cacti, although members of the succulent family, are often thought of separately.) Those definitions

aside, succulents are truly fascinating plants. Their symmetry is unusual in that they radiate from their centers like a living spirograph (math buffs might recognize the patterns of the Fibonacci sequence, or the golden ratio, in the radiating leaves of succulents).

The fleshy colors of succulents are very soothing and cooling to the eye...whether a

reddish brown or seaweed green or lime tone. And succulents have a wonderful tactile quality - they invite touch.

Most succulents come from desert or semi-desert areas of the world. Surprisingly, not all succulents are appropriate for full sun. Many grow in the shadow of rocks, trees or larger plants.

SUCCULENT CARE: The amount of water that succulents need depends on heat, humidity, atmosphere and rainfall level. Give plants just enough water to keep them plump-leafed and attractive. It's also a good idea to mimic the watering they receive in nature. One light feeding at the start of the growing season should be enough for plants in open ground.

Many gardeners choose to plant succulents in container gardens, or arrange them in rock gardens, along retaining walls, and in places where their ability to grow in small spaces is appreciated.

Sloat has a wide selection of succulents in stock, starting with basic favorites like echeveria, sedum, agave, aloe and aeonium. Stop by your local Sloat for additional individual selections.



Aeonium



Succulent Summer!

July: Terrific specials on Aeonium for Sloat Gardener's Reward Members

August: Succulent Container Seminar

Dawn Smith demonstrates how to create your own mini-landscape.

Aug.5-Kentfield, Sun., 10 am

Aug.19-Mill Valley, (Miller.), Sun., 10 am

Make your own succulent/cactus mix

Combine the following ratios:

1/2 Sloat potting soil

1/4 horticultural sand

1/4 lavarock

Add calcium (agricultural lime)

according to package directions

Summery lavender lemonade

1 quart lemonade

1 tablespoon dried lavender

1 cup of boiling water

Pour boiling water over lavender, steep 20 minutes, strain, add to lemonade. Serve chilled and garnish with lemon slices and lavender.



#@%&! * ... the gophers are back!

Question: *In my San Francisco neighborhood, the gophers maraud through my backyard every few months, staying long enough to destroy my lawn, plants and to drive my golden retriever crazy. How can I keep them from coming back?*

–A San Francisco gardener

Ah, the Bay Area gopher problem. There certainly was a good reason why the movie *Caddyshack* was made!

There are a few options to look at for gopher control, but all should come with the understanding that there is no sure-fire method and results will vary from garden to garden and especially from gopher to gopher!

Possible Solutions

1. The first defense is prevention with barricades. You can accomplish this by installing wire screen 2' below and 1-2' above all around the proposed planting area (do not use regular chicken wire – the holes are too big). This can take some work but a rented trencher will help. Or, at planting time, use gopher-repel root cages.

2. Sonic mole and gopher chasers. These eliminate the use of poisons and traps around children and pets; it is a humane and environmentally friendly way of minimizing damage to your gardens and lawns. Sloat Garden Center carries these in two forms: battery operated and solar powered. Pets won't be affected by the sound, but rodents find the noise irritating and move to quieter surroundings.



Sol Mate Mole Repeller is the newest in solar powered pest control. One full charge yields up to 7 days of power. Covers an area of approx. 7500 Square feet (1/6 acre).



The Sonic Molechaser is battery operated and produces a penetrating underground sonic pulse, covering up to 11,250 square feet (1/4 acre) in clay or hard soils. It can be buried flush with the lawn.

3. You can also spray **Bonide Mole & Gopher Repellent** at weekly intervals to repel gophers, moles, rabbits, and skunks in lawns, flowerbeds and gardens to direct the animals to the point where you want them to exit your yard.



Mole & Gopher Repellent Ready to Spray (Hose End)
* One Qt. per 10,000 sq. ft.



Mole Max Repellent Qt. RTU
* One Qt. treats 10,000 sq. ft. and lasts 30 days or more



Mole Max Repellent 5 & 10 lb. Granules
* Clean dustless biodegradable granules
* Safe around children, pets and plants
* 1 lb. treats 500 sq. ft. and lasts for 3 months

4. We've heard some gardeners have found success with sprinkling cayenne pepper in gopher nests (**Havahart Critter Ridder** contains cayenne pepper). Fish emulsion has also been used – the odor lasts in the soil as the fish is not completely decomposed (that's why plants like it too; it slowly releases nitrogen).

5. Poison baits are also available but recovery of the stricken animals is difficult and secondary poisonings of pets or owls is possible.

POTTERY SAMPLE SALE!

July 15, 16, 17 • Kentfield Store ONLY

700 Sir Francis Drake - 8:30 am to 6:30 pm

This is your once-a-year opportunity to see and purchase the latest trends in garden pottery design. Shop early for the best selection. Sample quantities are limited. Many one of a kind pieces!

Right from the factories...

Sloat Garden Center is one of the few direct importers of pottery from Vietnam, China and Malaysia. We provide pottery to other independent garden centers

throughout the U.S. and Canada.

Each July, buyers from many garden centers come to Sloat Garden Center to look at what's being offered for next year. Sloat is the first to get the new styles, colors, and

prototypes and we are proud of this offering.

After the factory representatives and the buyers leave, we still have the pottery and that's where our customers get great deals!

A magic potion of night blooming plants

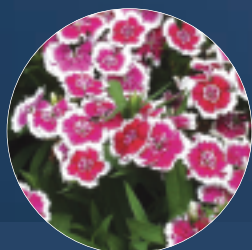
Sitting outside under the moon & stars, one can ponder the intoxicating potion of secret scents and sun-shy blossoms in a night blooming garden. This summer, venture out after dark and summon this evening magic with an array of plants known for their luminescent flowers, silvery foliage and nighttime fragrance.



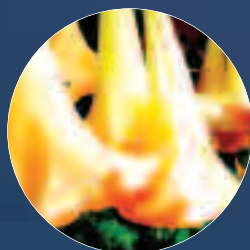
Plants that will bloom in late afternoon, stay open all night and close in the morning: Oenothera (evening primrose) can be grown from seed, Brugmansia (Angel's Trumpet), Zaluzianskya Midnight Candy and Four O'Clocks (Mirabilis) are easy to grow from seed and will return from carrot-like roots year after year. Of course, these all have a heady or sweet night perfume.

Plants that also have a night fragrance: Nicotiana grandiflora, Hosta, Dianthus and Honeysuckle. These also have the advantage of being white. The Moonflower, a morning glory relative, is available as seed.

Fragrant shrubs: Cestrum (Night blooming jasmine), Star Jasmine and Philadelphus.



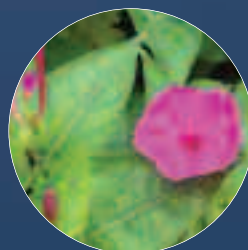
Dianthus



Brugmansia



Nicotiana



Mirabilis



Moonflower

Four Easy Ideas to Reduce Water Use this Summer

This winter we had some of the lowest rainfall amounts on record...and that affects all gardeners. With conservation in mind, we've collected four ways to reduce water consumption this summer.

1. Dramm Egg Timer: Simply set this "egg timer" and forget about watering! Measures actual time and automatically shuts off when your plants have been watered. Works with low pressure drip and soaker hoses, and has on/off knob for use like a faucet. Available in bright mix and match colors.

2. Dramm Water Wand: Water wands are both ergonomic and useful for conservation. The fingertip shut-off valve reduces overall water consumption by applying water where and when you want it - which means you can apply large quantities of water quickly at the plant base, where it soaks deep into the soil. Available in two sizes.

Both Dramm products are available in a wide selection of fun colors (makes them harder to lose in the garden).

3. Zeba: a superabsorbent polymer made from cornstarch - which means it's biodegradable, nontoxic and odorless. Zeba is made of glucose molecules, which are linked together chemically to become a water-insoluble, net-like matrix in the form of a hydrogel that holds and releases water for use by plants as needed. It's best to apply Zeba when plants first go into the ground.

4. Mulch: No other water conservation technique makes sense if you don't mulch along with it! Mulch helps plants retain water. Sloat offers mulch in a broad selection of shapes, colors and sizes.



We're in the neighborhood!

Pull together a yard full of carefully chosen plants, a manager who has worked in the nursery industry for decades, a dedicated staff, a resident cat and combine ingredients into an Asian, Irish and Russian neighborhood and what do you get? Sloat Garden Center's 3rd Avenue San Francisco store!

"We're in the middle of a diverse neighborhood, so we try to be as diverse with our plants as the customers that shop here," explains store manager Bill Barnett, who has been with Sloat for 18 years. "We have a broad draw; we attract customers from Pacific Heights to students on a definite budget."

Developing and maintaining relationships with customers and plant vendors is vital to the 3rd Avenue store. It is how Bill is able to bring in quality plants at great prices (his indoor plant selection is extraordinary and renowned in San Francisco).

According to Assistant Operations Manager Scott Peterson, what is most interesting about this store is how the limited San Francisco space is handled. "Bill and his staff are adept at displaying many different types of plants," Scott explains. "And they have made some very sophisticated plant choices. It's definitely not run of the mill stuff - this store specializes in nice specimens!"



3rd Avenue store staff: Kevin, Shaun, Bill
front row: Kat and Mike



3rd Avenue store's resident mouser "Monkey".
She is responsible for catnip quality control.

Children's Summer Garden Arts Series

developed and led by Melinda Rose

\$5 Materials Fee for all participants. All activities are geared towards children 5 to 12 years of age. Parental supervision is required during the seminars. Attendance is limited. Please call ahead to the seminar location to reserve a seat.



Colorful Caterpillars & Beneficial Butterflies

Jul. 29—San Rafael, Sun., 10 am
Kentfield, Sun., 12:30pm
San Bruno, Sun., 10 am

Fossils!

Children of all ages are welcome.
Aug. 5—Mill Valley (Miller Ave.),
Sun., 10am
San Rafael, Sun., 12:30 pm

Ponds!

*Learn what goes on in and around
the local pond.*
Aug. 12—Mill Valley (Miller Ave.),
Sun., 10 am
San Rafael, Sun., 12:30 pm

Ladybug Release Party!

Aug. 16—S.F. (Sloat Blvd.), 10 am
San Bruno, 12:30 pm
Aug. 19—San Rafael, Sun., 11am

SLOAT SEMINARS

*Attendance is limited. Please call ahead
to the seminar location to reserve a seat.
Seminar fee is \$5. Gardener's Reward Program
members are free.*

Pruning Perennials

Marie Miller demonstrates how to rejuvenate
these hard-working plants.
Jul. 11—S.F. (Sloat Blvd.) Wed., 6:30 pm

Mosquito Control

The friendly folks from the San Mateo Mosquito Abatement
District and the Contra Costa Mosquito and Vector Control
will be talking about ways to eliminate mosquito problems.
Jul. 14—San Bruno, Sat., 10 am
Aug. 11—Danville, Sat., 10 am-12 pm

Grow Your Own Cut Flowers

Dinah Sims, CCN Pro, shows how to grow great flowers.
Jul. 15—San Rafael, Sun., 10 am
Aug. 4—Mill Valley (Miller Ave.), Sat., 10 am

Carnivorous Plants

Peter D'Amato, author of "The Savage Garden,"
discusses carnivorous plants and their care.
Jul. 18—S.F. (Sloat Blvd.), Wed., 6:30 pm

Beyond Lavender

Sloat staffer Jacqueline Arkasali demonstrates
making unique gifts with this soothing herb.
Jul. 14—Danville, Sat., 10 am

Summer Rose Care

Dawn Smith, local rose expert, discusses
the special summer needs of roses.
Jul. 22—Kentfield, Sun., 10 a.m.
Jul. 29—Mill Valley (Miller Ave.) Sun., 10 am

Debbie Does Summer!

Local caterers Debbie Epstein and Edwin Olson demon-
strate colorful easy recipes featuring summer's bounty.
Jul. 22—S.F. (Pierce St.), Sun., 11 am
Aug. 5—San Rafael, Sun., 10 am
Aug. 26—Mill Valley (Miller Ave.), Sun., 10 am

Bee Friendly!

Phillip Gerrie, of the San Francisco Beekeepers
Association, discusses bee behaviour and safety.
Jul. 25—S.F. (Sloat Blvd.), Wed., 6:30 pm

Garden Design Basics

Confused about where to start? Join our
experts for some solid advice.
Jul. 28—Danville, Alexander, Sat., 10 am
Aug. 8—S.F. (Sloat Blvd.), O'Donoghue, Wed., 6:30 pm
Aug. 13—S.F. (Pierce St.), O'Donoghue, Mon., 6:30 pm

Succulent Container Gardens

Dawn Smith demonstrates how to
create your own mini-landscape.
Aug. 5—Kentfield, Sun., 10 am
Aug. 19—Mill Valley, (Miller Ave.), Sun., 10 am

Asian Gardens with a Twist!

Designer Mary Te Selle discusses interpreting
Asian style into a California aesthetic.
Aug. 18—Kentfield, Sat., 10 am
Aug. 22—S.F. (Sloat Blvd.), Wed., 6:30 pm



Red Star Cordyline



Festival Grass Cordyline



Kiwi Dazzler (in red pottery)

Cordyline. noun.

Originally home to the South Pacific, this plant was named cabbage tree because of its roots. Additionally, it provided a valuable carbohydrate food source and early missionaries brewed beer from it. The leaves & roots also produced plentiful fibers for everything from food wrappers to thatching and sandals.

Cordyline

exotic • tropical • colorful • easy

This summer, become acquainted with three terrific cordylines from **Monrovia**. For gardeners new to these tropicals, cordylines are woody plants with swordlike leaves that are related to yuccas and agaves, but usually ranked with palms...over the years they have become a staple of the Arts & Crafts era garden and California bungalow design. They look great next to swimming pools and water features, but as houseplants they prefer bright, indirect light (but tolerate low light).

Red Star Cordyline

Bright burgundy-red sword-like leaves make this an outstanding choice as a focal point in the landscape or large containers surrounded by bright flowered perennials and silver foliage. Fragrant white flowers top the stems in early summer. Moderate growing to 8 to 10 ft. tall, 5 ft. wide. Full to partial sun. Evergreen.

- Easy Care Plant
- Patio Container Plant
- Tropical
- Year-round Interest

Festival Grass™ Cordyline

This spicy new cordyline has glossy, exceptionally dark red-burgundy leaves to create both tropical drama and a bold modernistic accent in your backyard. Branched stems with tiny white flowers appear above the foliage - a chameleon suited to a wide range of styles and applications. Give this plant a rich Asian flare in Sloat's decadent glazed ceramic pots. Herbaceous perennial. Full sun. Fast growth to 3 feet tall and wide.

- Deer resistant
- Easy Care
- Summer Flowering
- Year-round Interest
- Evergreen

Kiwi Dazzler

Striking burgundy and pink striped sword-like leaves make this an outstanding choice as a focal point in the landscape or large containers surrounded by bright flowered perennials and silver foliage. Fragrant white flowers add a sweet scent. Moderate growing to 8 to 10 ft. tall, 5 ft. wide. Full to partial sun. In cooler climates, move indoors before the threat of frost. Evergreen.

- Dramatic Foliage Color
- Fragrant
- Patio Container Plant
- Summer Flowering
- Year-round Interest

Gorgeous Grafted Gardenias for your Garden

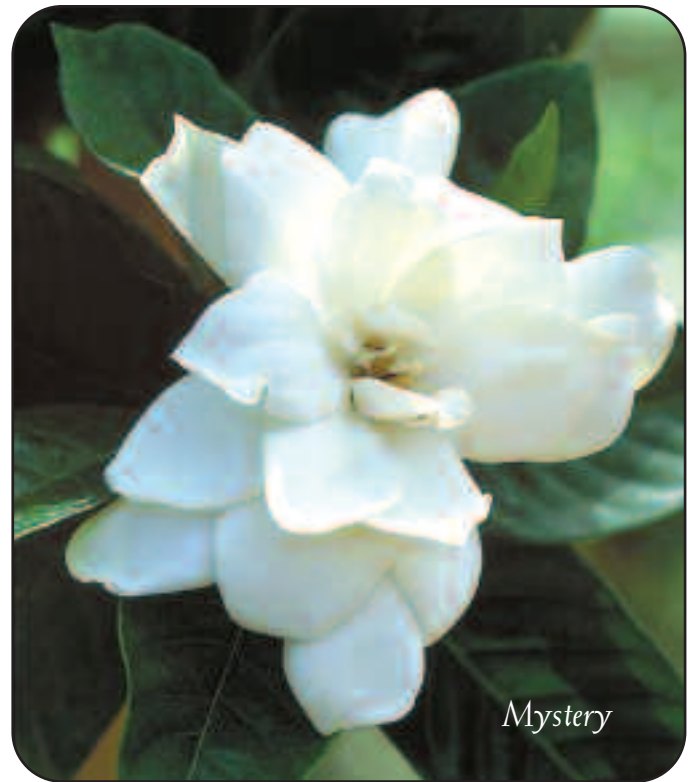
Get ready for a sweet, intoxicating scent when you add a grafted gardenia to your garden. **Monrovia's** grafted gardenias take the root stock of *Gardenia thunbergia*, known for its ability to grow well in our clay soil, and graft to it some of the most wonderful above-ground gardenia performers. Also, because the rootstock is adapted to our cold, clay soil, leaves stay green and won't yellow out as easily.

Gardenia cultivar 'Mystery' (right) produces huge, pure white flowers with the added protection of nematode-resistant rootstock. Beautiful upright branches are densely packed with forest green glossy leaves, making this compact shrub a true garden celebrity. Plant around outdoor living areas, entries and gateways to enjoy fragrance at close range. Evergreen shrub. Full to partial sun. Moderate growth 5 feet tall, 3 feet wide.

Other grafted varieties at Sloat this summer include: August Beauty, Vietchii and First Love[®] gardenia.

GARDENIA CARE:

Gardenias are full sun plants and they grow best in warmer areas. They require well-draining soil with plenty of rich organic matter. During the first year, regular watering will help establish deep roots. Mulch to keep roots cool. Gardenias benefit from regular feeding as well. A spring, summer and fall feeding is advised – we recommend a complete fertilizer like Maxsea Acid or E.B. Stone Organics Azalea, Camellia and Gardenia Food.



Mystery

Company Spotlight: MONROVIA[®]



Monrovia has been growing plants for independent garden centers since 1926.

For decades, Sloat Garden Center has sold Monrovia plants – and with very good reason; their quality and commitment to environmental stewardship is unsurpassed in the nursery industry.

California based Monrovia produces more than 2,200 varieties of perennials, conifers, woody ornamentals, shrubs, trees, citrus, camellias, rhododendrons and vines.

Their 5 wholesale nurseries are located

throughout the U.S. on 4,724 acres. Plants are sent from the nurseries in refrigerated trucks to more than 5,000 independent garden centers nationwide. Monrovia only sells plants to independent garden centers – you will not find Monrovia products at a box store.

Sloat Garden Center has been particularly proud to be associated with their accomplishments in the following areas:

- The EPA Evergreen Award – The Environmental Protection Agency (EPA) awarded Monrovia the prestigious EPA Evergreen Award, which recognizes outstanding pollution prevention efforts.
- Monrovia recycles over 90% of its irrigation water at its five growing locations, saving over 2.5 billion gallons per year.
- Their Plant Health Team hand weeds each of their 22 million plants at all growing locations as an alternative to using harmful chemicals.
- In the early 1990s, Monrovia switched to a system using slow release fertilizer incorporated in the soil. This allows a 75% reduction in the amount of nitrogen fertilizer applied through the irrigation water.
- Monrovia is a pioneer in irrigation automation. Hundreds of irrigation valves are wired to a central computer where site managers can monitor and choose the most effective means of irrigating plants.
- Monrovia is the only grower that custom blends 42 different soil mixes, including compost and native soils for their plants. Seven different types of mycorrhizae are added to their soil mix to create an environment that dramatically increases plant longevity. (Mycorrhizae are beneficial fungus that develops in and around a plant's roots, stimulating its nutrient and water uptake, increasing fruit and flower yield, and reducing transplant shock and other environmental stresses).
- Monrovia is about to introduce a biopot into their nurseries. Stay tuned!